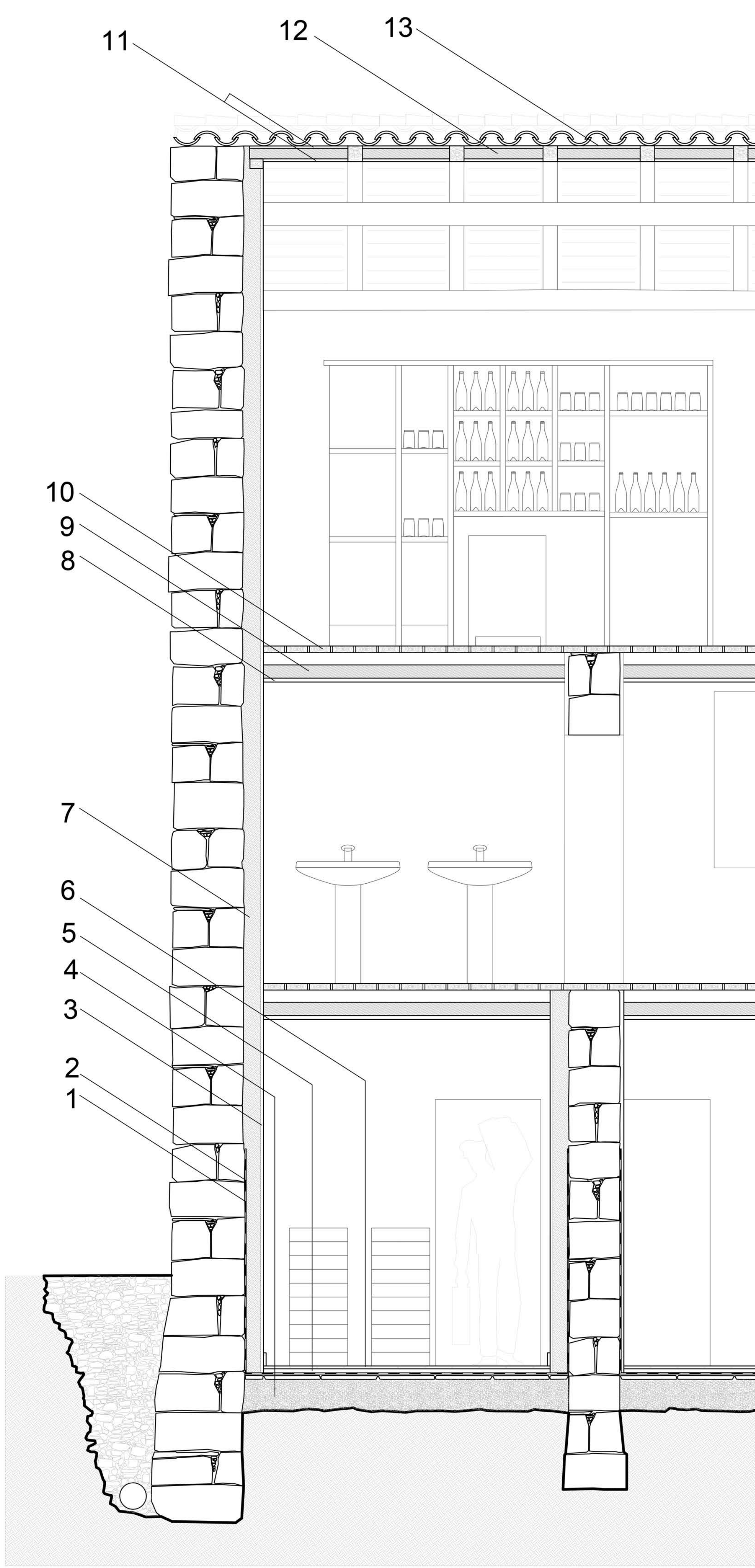


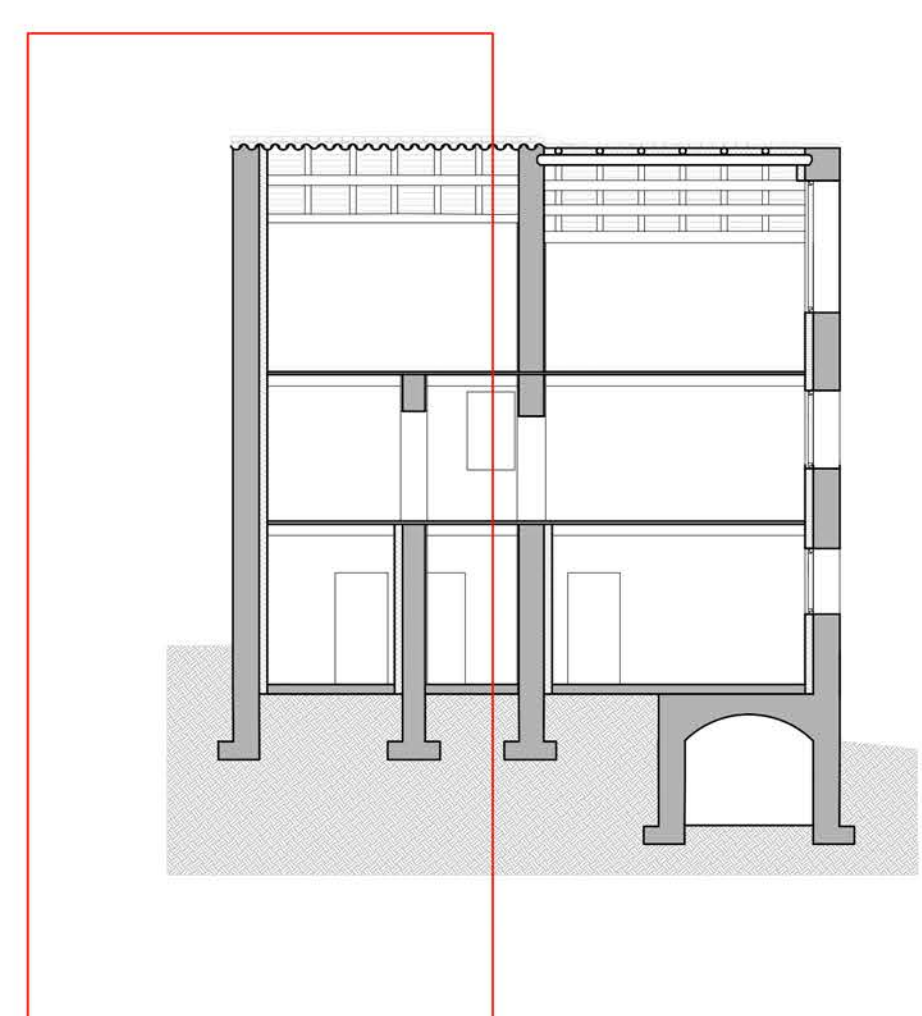
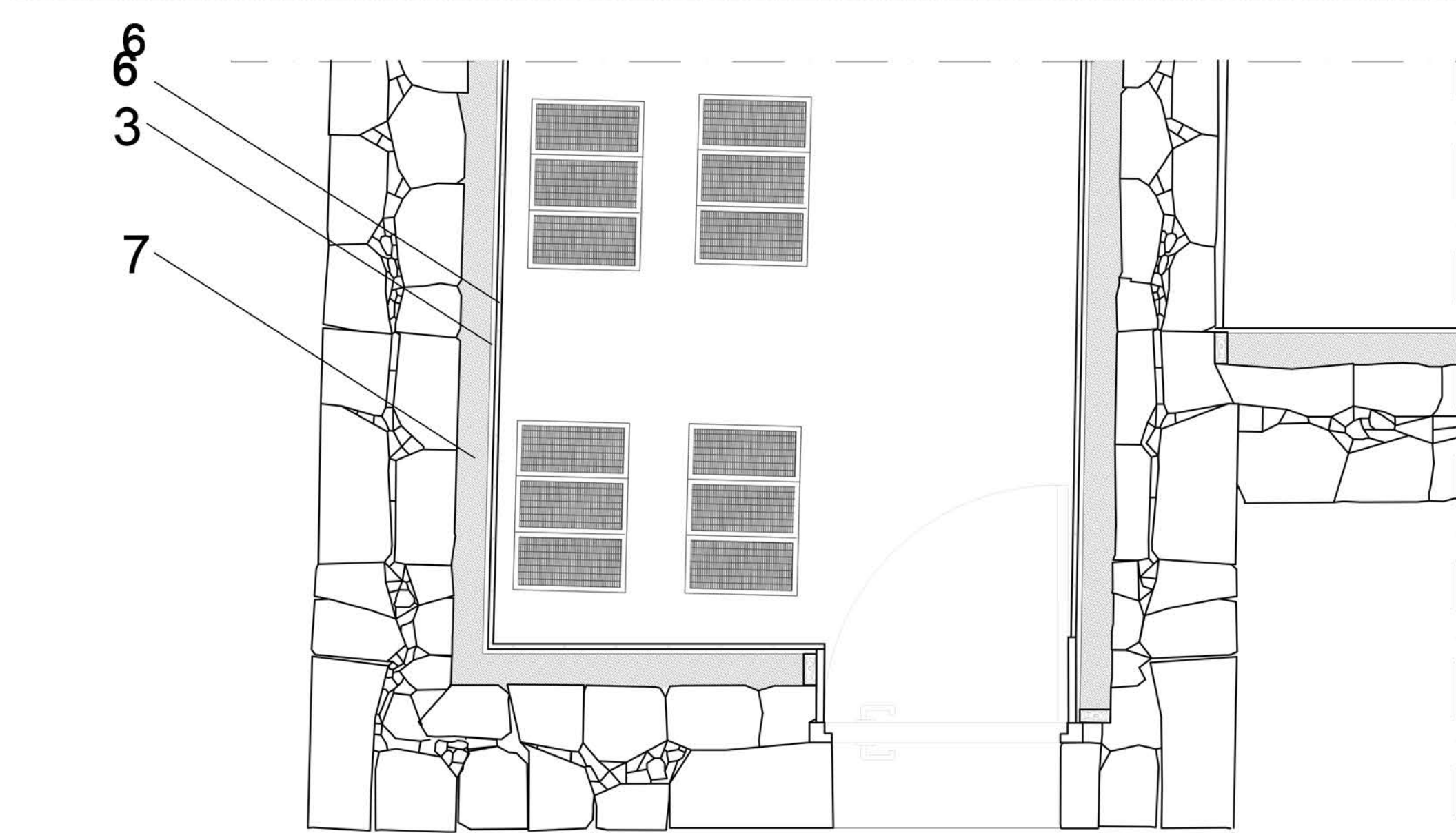


L'ALTA VALLE DEL CERVO: LA BÜRSCH
DETTAGLIO DELL' EDIFICIO DI PROGETTO



LEGENDA

- 1 Guaina impermeabile
- 2 Rete portaintonaco
- 3 Intonaco in calce di finitura
- 4 Argilla espansa (20 cm)
- 5 Massetto di posa (1 cm)
- 6 Piastrelle (1 cm)
- 7 Isolante in calce e canapa
- 8 Tavolato
- 9 Materassino isolante in canapa (10 cm)
- 10 Tavolato portante (5 cm)
- 11 Tavolato
- 12 Materassino isolante in canapa (10 cm)
- 13 Guaina impermeabile



DETTAGLIO 1
SCALA 1:20